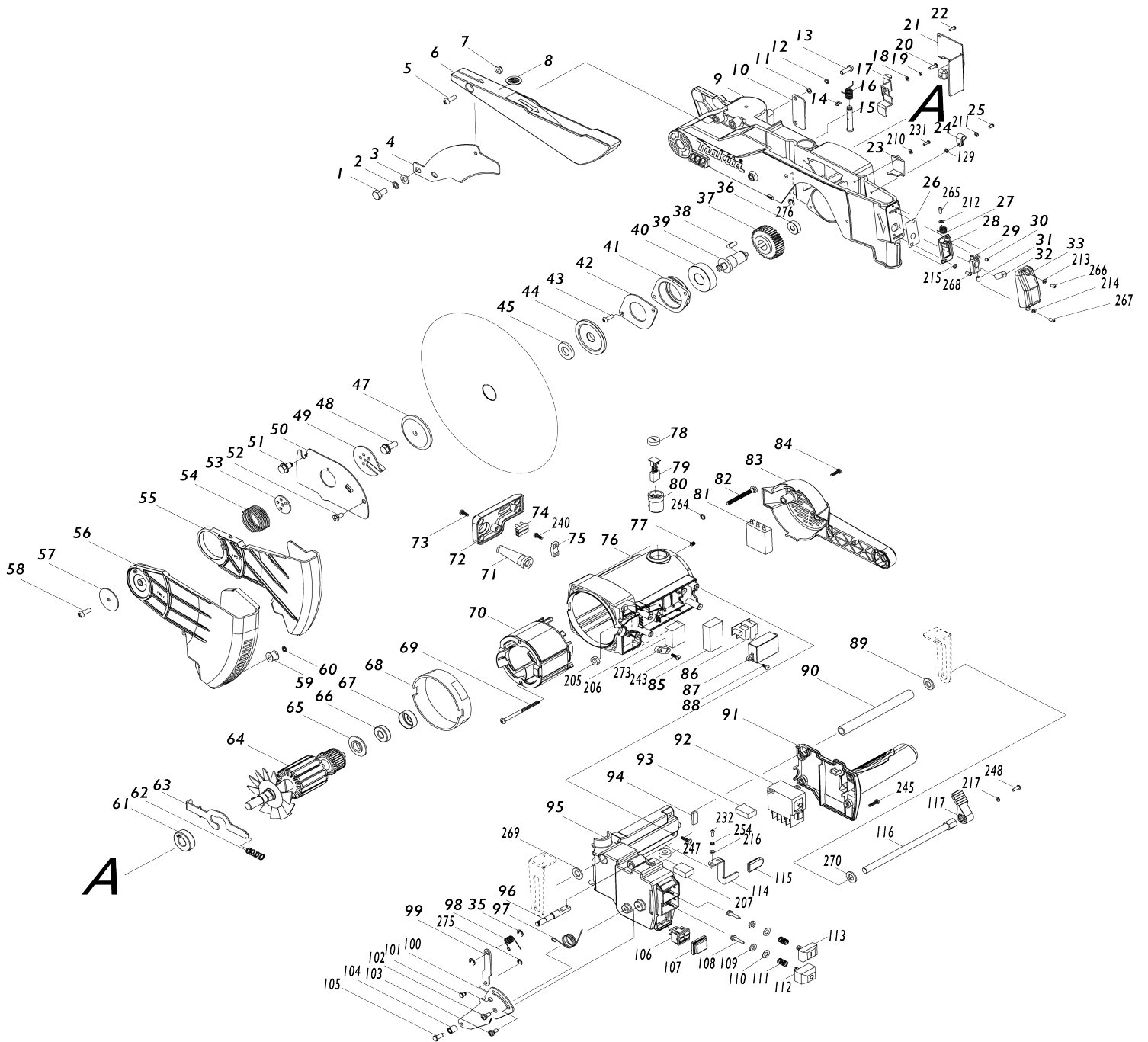


Model No.LH1201FL 305MM TABLE TOP MITER SAW



Model No.LH1201FL 305MM TABLE TOP MITER SAW

Item No.	Parts No.	Description	Interchangability	Q'ty	New/Old	Note1	Note2
001	JM23300009	HEX BOLT M8X16		2			
002	JM23300010	SPRING WASHER 8		2			
003	JM23300011	FLAT WASHER 8		2			
004	JM23300012	RIVING KNIFE		1			
005	JM23300013	PAN HEAD SCREW M6X16		1			
006	JM23300300	UP BLADE GUARD COMPLETE		1			
D10		INC. 8					
007	JM23300015	LOCKNUT M6		1	*		
007-1	JM23300015	LOCKNUT M6	O	1			
008	JM27080060	WARNING LABEL		1	*		
008-1	JM2708B060	CAUTION LABEL	X	1			
009	JM23300244	BLADE CASE		1	*		
009-1	JM23300244	BLADE CASE	O	1			
D10		INC. 36,143					
010	JM23300239	FENCE PRESS PLAT		1			
011	JM23300019	FLAT WASHER 6		2			
012	JM23300020	SPRING WASHER 6		2			
013	JM23300248	PAN HEAD SCREW M6X16		2			
014	JM23300022	E RING 5		1	*		
014-1	JM23300022	E RING 5	O	1			
015	JM23300023	LIFTING LIMITED PLATE SHAFT		1			
016	JM23300024	TORSION SPRING		1			
017	JM23300025	LIFTING LIMITED PLATE		1			
018	JM23300026	FLAT WASHER 4		2			
019	JM23300027	SPRING WASHER 4		2			
020	JM23300028	PAN HEAD SCREW M4X12		2			
021	JM23300029	PROTECTION COVER		1			
022	JM23300030	PAN HEAD SCREW M4X10		2			
023	JM23300031	LASER TERMINAL BOX COVER		1			
024	JM23300032	CORD CLAMP		1			
025	JM23300033	PAN HEAD SCREW M4X8		1			
026	JM23300034	LASER DUST-PROOF WASHER		1			
027	JM23300035	LASER SPRING		1			
028	JM23300036	LASER BRACKET		1			
029	JM23300037	LASER TURNING BRACKET		1			
030	JM23300038	HEX SOCKET SET SCREW M4X6		1			
031	JM23300039	H.S.SETTING SCREW M5X8		1	*		
031-1	JM23300039	H.S.SETTING SCREW M5X8	O	1			
032	JM23300040	LASER DIODE		1			
033	JM23300041	LASER COVER		1			
035	JM23300042	E RING 6		2	*		
035-1	JM23300042	E RING 6	O	1			
036	JM23300043	BEARING 608		1			
037	JM23300044	SPINDLE GEAR		1	*		
037-1	JM23300044	SPINDLE GEAR	O	1			
038	JM23300045	KEY 6X16		1			
039	JM23300046	SPINDLE		1			

040	JM23300047	BEARING 6204		1		
041	JM23300048	BEARING BRACKET		1		
042	JM23300049	BEARING COVER		1		
043	JM23300050	H.S.BOLT M5X16		2	*	
043-1	JM23300050	H.S.BOLT M5X16	O	2		
044	JM23300051	INNER FLANGE		1		
045	JM23100144	RING 30		1	*	
047	JM23300053	OUTER FLANGE		1		
048	JM23300054	FLANGE BOLT M8X20		1	*	
048-1	JM23300054	FLANGE BOLT M8X20	O	1		
049	JM23300055	CENTER PLATE		1		
050	JM23300056	GUARD FIX PLATE		1		
051	JM23300057	GUARD SCREW M8X12		1		
052	JM23300058	GUARD LOCK BOLT		1	*	
052-1	JM23300058	GUARD LOCK BOLT	O	1		
053	JM23300059	CENTER WASHER		1		
054	JM23300060	GUARD TORSION SPRING		1		
055	JM23300061	INNER GUARD		1		
056	JM23300310	OUTER GUARD COMPLETE		1		
D10		INC. 59,60				
057	JM23300063	FIX PLATE		1		
058	JM23300064	PAN HEAD SCREW M5X25		1		
059	JM23300065	GUARD ROLLER SLEEVE		1		
060	JM23300066	INNER STAR WASHER 5		1	*	
060-1	JM23300066	INNER STAR WASHER 5	O	1		
061	JM23300067	BEARING 6202-RS		1		
062	JM23300068	COMPRESSION SPRING		1		
063	JM23300069	SHAFT LOCK PLATE		1		
064	JM23300001	ARMATURE 230V		1		
D10		INC. 61, 65, 66				
065	JM23300070	DUST PROOF COVER		1		
066	JM23300071	BEARING 6001-RS		1		
067	JM23300072	BUFFER PAD		1		
068	JM23300073	BAFFLE PLATE		1		
069	JM23300074	TAPPING SCREW ST4.8X75		2		
070	JM23300003	FIELD 230V		1		
071	JM23300075	PROTECTION TUBE		1		
072	JM23300076	TERMINAL BOX COVER		1		
073	JM23300077	TAPPING SCREW ST4.2X12		5	*	
073-1	JM23300088	TAPPING SCREW ST4.2X16	X	5		
074	JM23300078	CONNECTION TERMINAL		1		
075	JM23300079	CORD CLAMP		1		
076	JM23300320	MOTOR HOUSING COMPLETE		1		
D10		INC. 77,80				
077	JM23300081	H.S.SETTING SCREW M5X8		2	*	
078	JM23300082	CARBON BRUSH COVER		2		
079	JM23000123	CARBON BRUSH 2PCS/SET		1		
080	JM23300084	CARBON BRUSH HOLDER		2	*	
081	JM23300085	SOFT STARTER		1	*	
081-1	JM23300085	SOFT STARTER	O	1		
082	JM23300086	PAN HEAD SCREW M6X55		4		
083	JM23300087	REAR COVER		1		

084	JM23300088	TAPPING SCREW ST4.2X16		4			
085	JM23300089	SPONGE A		1	*		
085-1	JM23300089	SPONGE A	O	1			
086	JM23300090	TRANSFORMER B03		1	*		
086-1	JM23300090	TRANSFORMER B03	O	1			
087	JM23300091	TRANSFORMER COVER		1			
088	JM23300092	TAPPING SCREW ST4.2X8		2	*		
088-1	JM23300077	TAPPING SCREW ST4.2X12	X	2			
089	JM23300093	FLAT WASHER 10		1			
090	JM23300094	TABLE LOCK TUBE		1			
091	JM23300095	HANDLE COVER		1			
092	JM23300096	SWITCH		1	*		
092-1	JM23300096	SWITCH	O	1			
093	JM23300097	CAPACITOR		1			
094	JM23300098	SPONGE B		1			
095	JM23300099	HANDLE		1			
096	JM23300100	TURNING SHAFT		1			
097	JM23300101	TORSION SPRING		1			
098	JM23300102	TORSION SPRING		1			
099	JM23300103	LOCK LEVER B		1			
100	JM23300330	LOCKING PLATE COMPLETE		1			
D10		INC. 104,105					
101	JM23300105	RIVET		1	*		
101-1	JM23300105	RIVET	O	1			
102	JM23300106	CONNECTION SCREW		1	*		
102-1	JM23300106	CONNECTION SCREW	O	1			
103	JM23300107	PIN		1	*		
103-1	JM23300107	PIN	O	1			
104	JM23300108	TURNING SLEEVE		1	*		
105	JM23300109	PIN		1	*		
106	JM23300110	SWITCH HY39-2		1			
107	JM23300111	SWITCH COVER HY39-2		1			
108	JM23300112	PRESS BUTTON CAP		1	*		
108-1	JM23300112	PRESS BUTTON CAP	O	1			
109	JM23300113	FELT RING		2			
110	JM23300114	WASHER		2			
111	JM23300115	SPRING		2			
112	JM23300116	SWITCH OFF BUTTON		1			
113	JM23300117	SWITCH ON BUTTON		1			
114	JM23300118	LOCK LEVER		1			
115	JM23300119	LEVER CAP		1			
116	JM23300120	TABLE LOCK BOLT		1			
117	JM23300121	TABLE LOCKING LEVER		1			
118	JM23300245	INTERLOCK PLATE		1			
119	JM23300123	LOCKNUT M5		2	*		
119-1	JM23300123	LOCKNUT M5	O	2			
120	JM23300124	COUNTERSUNK SCREW M5X14		2	*		
120-1	JM23300124	COUNTERSUNK SCREW M5X14	O	2			
121	JM23300125	TAPPING SCREW ST3.5X14		4			
122	JM23300126	WORKING TABLE		1			
123	JM23300236	TABLE LIFTING SQUARE TUBE		1			

124	JM23300128	PRESS WASHER		1		
125	JM23300129	LOCK SPRING		1		
126	JM23300130	TABLE LOCKING BOLT		1	*	
126-1	JM23300130	TABLE LOCKING BOLT	O	1		
127	JM23300131	TABLE SCALE LABEL		1		
128	JM23300132	TABLE SUPPORT PLATE		1	*	
128-1	JM23300132	TABLE SUPPORT PLATE	O	2		
129	JM23300133	OUTER STAR WASHER 4		1	*	
130	JM23300134	CORD CLIP		1		
131	JM23300135	TERMINAL BOX		1		
132	JM23300136	TERMINAL BOX COVER		1		
133	JM23300137	PAN HEAD SCREW M4X14		3		
134	JM23300138	LAMP COVER		1		
135	JM23300139	LAMP BOX		1		
136	JM23300140	TAPPING SCREW ST3.5X9		2	*	
136-1	JM23300140	TAPPING SCREW ST3.5X9	O	2		
137	JM23300141	UNDER GUARD		1		
138	JM23300142	COMPRESSION SPRING		1		
139	JM23300143	H.S.SETTING SCREW M6X16		1	*	
139-1	JM23300143	H.S.SETTING SCREW M6X16	O	1		
140	JM23300144	LINK PLATE SCREW		1		
141	JM23300340	LINK PLATE COMPLETE		1		
D10		INC. 146-148				
142	JM23300146	SLEEVE		1		
143	JM23300147	LINK PIN		1		
144	JM23300148	LINK PIN RING		1		
145	JM23300149	THIN FLAT WASHER 6		1		
146	JM23300150	WASHER		1	*	
147	JM23300151	BEARING 619-6-2Z		1	*	
148	JM23300152	LINK PIN SHAFT		1	*	
149	JM23300153	COMPRESSION SPRING		1		
150	JM23300154	SPRING COVER		1		
151	JM23300155	H.S.BOLT M6X12		1	*	
151-1	JM23300155	H.S.BOLT M6X12	O	1		
152	JM23300156	SPRING BRACKET		1		
153	JM23300157	SPRING SUPPORT BRACKET		1		
154	JM23300158	BALL TYPE KNOB		1		
155	JM23300159	BEVEL BRACKET		1	*	
156	JM23300160	O TYPE RING 8.5		1	*	
156-1	JM23300160	O TYPE RING 8.5	O	1		
157	JM23300161	LOCK PIN		1		
158	JM23300162	BEVEL LOCK HANDLE		1		
159	JM23300163	LOCKNUT M12		1	*	
159-1	JM23300163	LOCKNUT M12	O	1		
160	JM23300164	FLAT WASHER 12		1		
161	JM23300165	BEVEL LOCK ROD		1		
162	JM23300166	BEVEL SHAFT		1		
163	JM23300167	HEX NUT M8		3	*	
163-1	JM23300167	HEX NUT M8	O	1		
164	JM23300168	BUFFER WASHER		1		
165	JM23300169	HEX BOLT M8X50		1		
166	JM23300170	H.S.BOLT M5X8		4	*	

166-1	JM23300170	H.S.BOLT M5X8	O	4			
167	JM23300171	SPRING WASHER 5		4			
168	JM23300172	GUARD FIX PLATE		1			
169	JM23300173	GUARD BRACKET		1			
170	JM23300174	SPRING SCREW		1			
171	JM23300175	BEVEL SCALE LABEL		1			
172	JM23300176	ORIENTING SCREW		1	*		
172-1	JM23300176	ORIENTING SCREW	O	1			
173	JM23300178	SPRING		1			
174	JM23300177	CUTTING DEPTH ADJUSTING NUT		1			
175	JM23300179	PIVOT		1			
176	JM23300180	WRENCH CLIP		1			
177	JM23300181	BACK SUPPORT		1			
178	JM23300182	MITER POINTER		1			
179	JM23300183	DUST PORT		1			
180	JM23300184	ELASTIC PIN M4X30		1	*		
180-1	JM23300184	ELASTIC PIN M4X30	O	1			
181	JM23300185	FRICTION WASHER		2	*		
181-1	JM23300185	FRICTION WASHER	O	2			
182	JM23300186	DUST-PROOF COVER		1			
183	JM23300187	WING KNOT		2			
184	JM23300188	HEX BOLT M8X30		4			
185	JM23300189	BIG FLAT WASHER 8		5	*		
185-1	JM23300189	BIG FLAT WASHER 8	O	4			
186	JM23300240	GUIDE FENCE		1			
187	JM23300191	TABLE KERF RIGHT		1			
188	JM23300192	TABLE KERF LEFT		1			
189	JM23300193	LOCKNUT M8		1	*		
189-1	JM23300193	LOCKNUT M8	O	1			
190	JM23300194	BEVEL POINTER		1			
191	JM23300195	MITER WORKING TABLE		1			
192	JM23300196	INSERT PLATE		1			
193	JM23300197	WING LOCK KNOB		2			
194	JM23300350	BASE COMPLETE		1			
D10		INC. 196					
196	JM23300199	MITER SCALE LABEL		1			
197	JM23300200	WORKING TABLE PRESS PLATE A		1			
198	JM23300201	MITER LOCK ROD		1			
199	JM23300202	MITER LOCK SPRING		1			
200	JM23300203	MITER LOCK PRESS PLATE		1			
201	JM23300204	TABLE TURNING KNOB		1			
202	JM23300205	WORKING TABLE LOCKING PIN		1			
203	JM23300206	HEX BOLT M8X35		1			
204	JM23300207	BUFFER PAD		4			
205	JM23300208	STRAIN & RELIEF		1			
206	JM23300209	SPONGE C		1	*		
206-1	JM23300209	SPONGE C	O	1			
207	JM23300210	SPONGE D		1			
208	JM23300360	ARM COMPLETE		1			
D10		INC. 171					
209	JM23000156	POWER SUPPLY CORD ASSY EUR		1			

		O				
210	JM23300026	FLAT WASHER 4		1		
211	JM23300026	FLAT WASHER 4		1		
212	JM23300026	FLAT WASHER 4		1		
213	JM23300026	FLAT WASHER 4		1		
214	JM23300026	FLAT WASHER 4		1		
215	JM23300026	FLAT WASHER 4		2		
216	JM23300026	FLAT WASHER 4		2		
217	JM23300026	FLAT WASHER 4		1		
218	JM23300026	FLAT WASHER 4		1		
219	JM23300026	FLAT WASHER 4		1		
220	JM23300026	FLAT WASHER 4		3		
221	JM23300026	FLAT WASHER 4		1		
222	JM23300026	FLAT WASHER 4		3		
223	JM23300026	FLAT WASHER 4		1		
224	JM23300026	FLAT WASHER 4		4	*	
224-1	JM23300026	FLAT WASHER 4	O	5		
225	JM23300026	FLAT WASHER 4		1		
226	JM23300026	FLAT WASHER 4		2		
227	JM23300026	FLAT WASHER 4		4		
228	JM23300026	FLAT WASHER 4		1	*	
228-1	JM23300027	SPRING WASHER 4	X	1		
229	JM23300026	FLAT WASHER 4		2		
230	JM23300026	FLAT WASHER 4		1		
231	JM23300030	PAN HEAD SCREW M4X10		1		
232	JM23300030	PAN HEAD SCREW M4X10		2		
233	JM23300030	PAN HEAD SCREW M4X10		1		
234	JM23300030	PAN HEAD SCREW M4X10		1		
235	JM23300030	PAN HEAD SCREW M4X10		1		
236	JM23300030	PAN HEAD SCREW M4X10		4	*	
236-1	JM23300030	PAN HEAD SCREW M4X10	O	5		
237	JM23300030	PAN HEAD SCREW M4X10		2		
238	JM23300030	PAN HEAD SCREW M4X10		1		
239	JM23300030	PAN HEAD SCREW M4X10		2		
240	JM23300077	TAPPING SCREW ST4.2X12		2		
241	JM23300077	TAPPING SCREW ST4.2X12		4		
242	JM23300077	TAPPING SCREW ST4.2X12		2		
243	JM23300077	TAPPING SCREW ST4.2X12		2		
244	JM23300088	TAPPING SCREW ST4.2X16		4	*	
244-1	JM23300088	TAPPING SCREW ST4.2X16	O	4		
245	JM23300088	TAPPING SCREW ST4.2X16		4		
246	JM23300133	OUTER STAR WASHER 4		1		
247	JM23300208	STRAIN & RELIEF		1		
248	JM23300028	PAN HEAD SCREW M4X12		1		
249	JM23300028	PAN HEAD SCREW M4X12		1		
250	JM23300028	PAN HEAD SCREW M4X12		1		
251	JM23300028	PAN HEAD SCREW M4X12		1		
252	JM23300028	PAN HEAD SCREW M4X12		4		
253	JM23300028	PAN HEAD SCREW M4X12		3		
254	JM23300027	SPRING WASHER 4		2		
255	JM23300027	SPRING WASHER 4		3		
256	JM23300027	SPRING WASHER 4		1		

257	JM23300027	SPRING WASHER 4		2		
258	JM23300027	SPRING WASHER 4		1	*	
258-1	JM23300026	FLAT WASHER 4	X	1		
259	JM23300027	SPRING WASHER 4		2		
260	JM23300124	COUNTERSUNK SCREW M5X14		4	*	
260-1	JM23300124	COUNTERSUNK SCREW M5X14	O	4		
261	JM23300124	COUNTERSUNK SCREW M5X14		2	*	
261-1	JM23300124	COUNTERSUNK SCREW M5X14	O	2		
262	JM23300124	COUNTERSUNK SCREW M5X14		4	*	
262-1	JM23300124	COUNTERSUNK SCREW M5X14	O	4		
263	JM23300010	SPRING WASHER 8		4		
264	JM23300019	FLAT WASHER 6		4		
265	JM23300033	PAN HEAD SCREW M4X8		1		
266	JM23300033	PAN HEAD SCREW M4X8		1		
267	JM23300033	PAN HEAD SCREW M4X8		1		
268	JM23300033	PAN HEAD SCREW M4X8		2		
269	JM23300093	FLAT WASHER 10		1		
270	JM23300093	FLAT WASHER 10		1		
271	JM23300093	FLAT WASHER 10		1	*	
272	JM23300093	FLAT WASHER 10		1		
273	JM23300079	CORD CLAMP		1		
274	JM23300079	CORD CLAMP		2		
275	JM23300022	E RING 5		1	*	
275-1	JM27100079	E RING 5	X	1		
276	JM23300022	E RING 5		1	*	
276-1	JM23300042	E RING 6	X	1		
277	JM23300022	E RING 5		1	*	
277-1	JM23300022	E RING 5	O	1		
278	JM27080060	WARNING LABEL		2	*	
278-1	JM2708B060	CAUTION LABEL	X	2		
279	JM23300121	TABLE LOCKING LEVER		1		
280	JM23300169	HEX BOLT M8X50		1		
281	JM23300226	RETAINING RING		1	*	
281-1	JM23300226	RETAINING RING	O	1		
282	JM23300227	PRESS BUTTON CAP L		1	*	
282-1	JM23300227	PRESS BUTTON CAP L	O	1		
283	JM23300246	LIFTING RACK		1		
284	JM23300124	COUNTERSUNK SCREW M5X14		2	*	
284-1	JM23300124	COUNTERSUNK SCREW M5X14	O	2		
285	JM23300247	RING		2	*	
286	JM23300241	LIFTING GEAR		1		
287	JM23300242	LIFTING KNOB		1		
288	JM23300243	FIX BOLT		1	*	
288-1	JM23300243	FIX BOLT	O	1		
289	JM23310001	SUB FENCE COMPLETE		1		
D10		INC. 312				
290	JM23300237	COUTERSUNK HEAD SCREW M6X 35		1		
291	JM23100110	HEX LOCK NUT M6		1	*	
291-1	JM23100110	HEX LOCK NUT M6	O	1		
292	JM23300238	FIX PLATE		1		
293	JM23100033	PAN HEAD SCREW M4X12		1	*	

293-1	JM23300028	PAN HEAD SCREW M4X12	X	1		
294	JM23000137	SPRING WASHER4		1	*	
294-1	JM23300027	SPRING WASHER 4	X	1		
295	JM23100071	THIN FLAT WASHER 6		1	*	
295-1	JM23300149	THIN FLAT WASHER 6	X	1		
296	JM27080108	LABEL(RIVING KNIFE SETTING)		1		
297	JM23300093	FLAT WASHER 10		1		
298	JM23300026	FLAT WASHER 4		1		
299	JM23300150	WASHER		1		
300	JM00000362	INSERT BAR		1		
301	JM2318A058	CAUTION LABEL		1		
302	JM23180059	CAUTION LABEL		1		
303	JM23300008	RIP FENCE ASSY		1		
D10		INC. 304				
304	810191-7	CAUTION LABEL		1		
305	JM23300217	LOW PROTECTION GUARD		1		
D10		INC. 306				
306	JM23380059	LOGO LABEL		1		
307	JM23300167	HEX NUT M8		1		
308	JM23300167	HEX NUT M8		1		
309	JM23300189	BIG FLAT WASHER 8		1		
311	JM23100502	WISE ASSEMBLY		1		
312	JM23380067	CAUTION LABEL		1		
313	JM23100500	HOLDER		2		
314	JM23180056	CAUTION LABEL		1		
315	JM23380098	NAME PLATE		1		
316	JM23300142	COMPRESSION SPRING		1		
317	JM23300042	E RING 6		1		
A01	JM23300006	SAW BLADE		1	*	
A01-1	JM23300006	SAW BLADE	O	1		
A02	JM23300008	RIP FENCE ASSY		1	*	
C10	JM23300228	FENCE KNOB		1	*	
C20	JM23300229	FENCE ORIENTAION PIN		1	*	
C30	JM23300230	FENCE BRACKET		1	*	
C40	JM23300231	FENCE		1	*	
C50	JM23300232	FENCE LOCK PLATE		1	*	
C60	JM23300233	LOCKING BRACKET		1	*	
C70	JM23300234	ADJUSTABLE SCREW		1	*	
C80	JM23300235	FENCE LOCK KNOB		1	*	
C90	JM23300019	FLAT WASHER 6		1	*	
A03	JM23300217	LOW PROTECTION GUARD		1	*	
A04	JM23100197	BOX WRENCH 13-3		1		
A05	JM23100500	HOLDER		2	*	
A06	JM23100501	DUST BAG ASSEMBLY		1		
A07	JM23100502	WISE ASSEMBLY		1	*	
A08	JM27000086	PUSH STICK		1		
A09	JM27000328	TRIANGLE PLATE		1		
A10	JM23100144	RING 30		1		
E01	JM23310001	SUB FENCE COMPLETE		1	*	
E02	JM23300237	COUTERSUNK HEAD SCREW M6X 35		1	*	
E03	JM23100110	HEX LOCK NUT M6		1	*	

E04	JM23300238	FIX PLATE		1	*		
E05	JM23100033	PAN HEAD SCREW M4X12		1	*		
E06	JM23000137	SPRING WASHER4		1	*		
E07	JM23100071	THIN FLAT WASHER 6		1	*		

Please state Parts No. when your order.

Print Date 26.10.2023